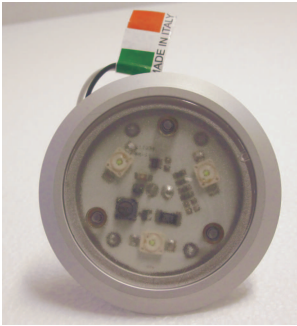

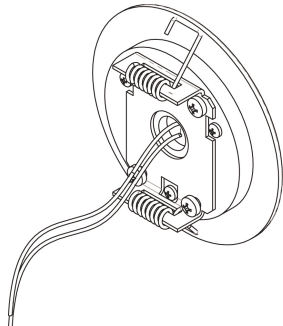


# NEW CEILING LIGHTS

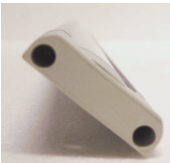
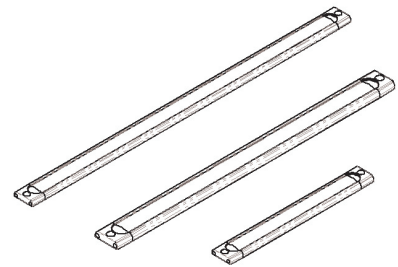
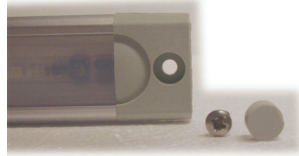
<b>PLUS Catalogue Category:</b>	<b>Ceiling light</b>
<b>General description</b>	
<p>These linear or round ceiling lights feature power LEDs with cold white (CW) and warm white (WW) emitted light with several power options. The switching regulator included allows a functioning with a wide range of power supply going from 10 to 30V. <i>Soft start</i> versions (/S) feature smooth lightning when turning ON.</p>	
<b>Homologation</b>	
Homologation ECE REG. 10 (electromagnetic stability) pending .	

<b>ROUND CEILING LIGHTS</b>							
							
<b>CW= Cold White;</b> <b>WW= Warm White;</b> <b>/S= soft start</b>							
Product	Code	Dimensions $\emptyset$ ext, $\emptyset$ drill, h	Power supply	Current absorbed $V_{dc} = 12V$	LED count	LED type	Luminous intensity
Roud3 CW	PLS120003-0	69,50,10	10-30 V	350 mA	3	3 W	330 lm
Roud3 SOFT CW/S	PLS120003-1	69,50,10	10-30 V	350 mA	3	3 W	330 lm
Round3 WW	PLS120004-0	69,50,10	10-30 V	350 mA	3	3 W	300 lm
Round3 SOFT WW/S	PLS120004-1	69,50,10	10-30 V	350 mA	3	3 W	300 lm

# NEW CEILING LIGHTS

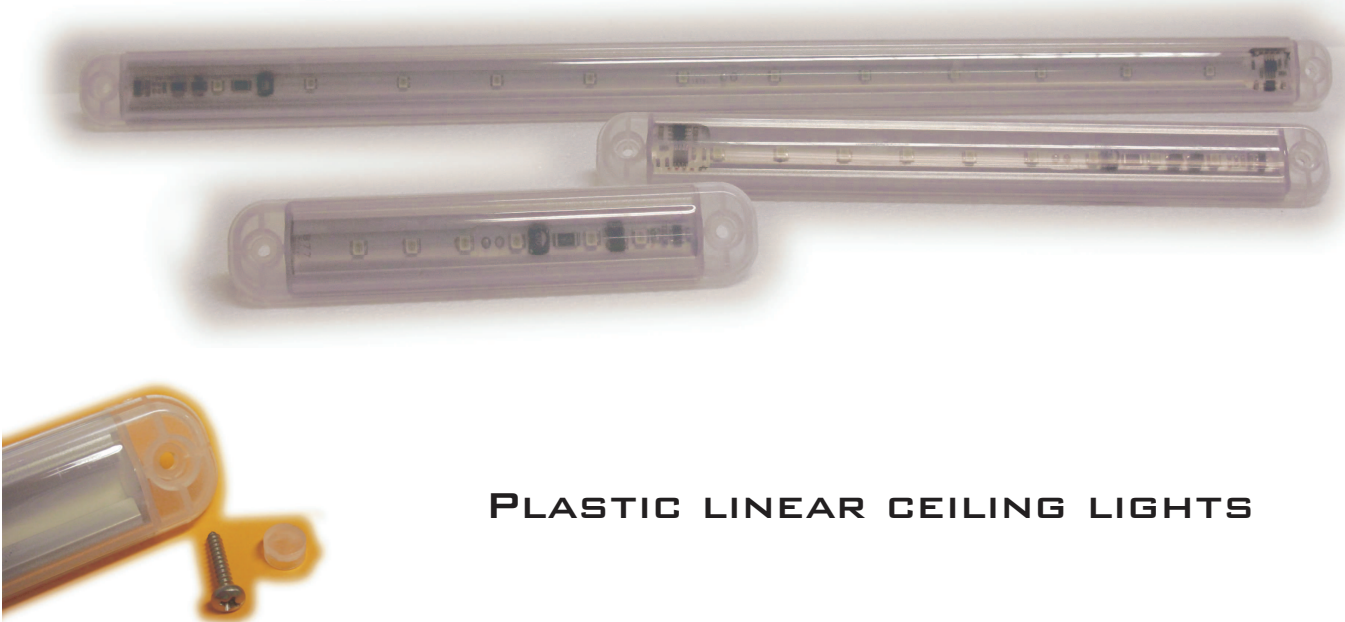
## METAL LINEAR CEILING LIGHTS

CW= Cold White;  
WW= Warm White;  
/S= soft start



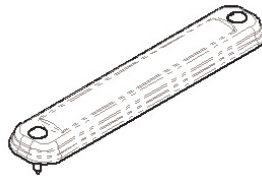
Product	Code	Dimensions $\varnothing_{ext}$ , $\varnothing_{drill}$ , h	Power supply	Current absorbed $V_{dc} = 12V$	LED count	LED type	Luminous intensity
ELBA CW	PLS120005-0	237x31x8 mm	10-30 V	200 mA	27	150 mW	160 lm
ELBA WW	PLS120006-0	237x31x8 mm	10-30 V	200 mA	27	150 mW	135 lm
PISA CW	PLS120007-0	382x31x8 mm	10-30 V	400 mA	51	150 mW	306 lm
PISA WW	PLS120008-0	382x31x8 mm	10-30 V	400 mA	51	150 mW	255 lm
SIENA CW	PLS120009-0	526x31x8 mm	10-30 V	600 mA	75	150 mW	450 lm
SIENA WW	PLS120010-0	526x31x8 mm	10-30 V	600 mA	75	150 mW	375 lm

# NEW CEILING LIGHTS



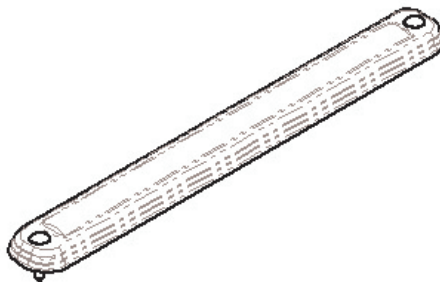
## PLASTIC LINEAR CEILING LIGHTS

CW= Cold White;  
WW= Warm White;



<b>CAPRI CW0</b>	<b>PLS120011-0</b>	156x31x10 mm	10-30 V	300 mA	6	0.5 W	240 lm
<b>CAPRI CW3</b>	<b>PLS120011-1</b>	156x31x10 mm	10-30 V	300 mA	3	3 W	300 lm
<b>CAPRI WW0</b>	<b>PLS120012-0</b>	156x31x10 mm	10-30 V	300 mA	6	0.5 W	210 lm
<b>CAPRI WW3</b>	<b>PLS120012-1</b>	156x31x10 mm	10-30 V	300 mA	3	3 W	261 lm

CW= Cold White;  
WW= Warm White;  
/S= soft start

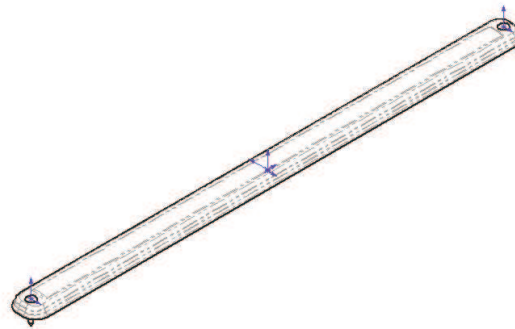


<b>ISCHIA CW0</b>	<b>PLS120013-0</b>	256x31x10 mm	10-30 V	450 mA	9	0.5 W	360 lm
<b>ISCHIA CW3</b>	<b>PLS120013-1</b>	256x31x10 mm	10-30 V	600 mA	6	3 W	600 lm
<b>ISCHIA WW0</b>	<b>PLS120014-0</b>	256x31x10 mm	10-30 V	450 mA	9	0.5 W	315 lm
<b>ISCHIA WW3</b>	<b>PLS120014-1</b>	256x31x10 mm	10-30 V	600 mA	6	3 W	522 lm
<b>ISCHIA SOFT CW0/S</b>	<b>PLS120015-0</b>	256x31x10 mm	10-30 V	450 mA	9	0.5 W	360 lm

# NEW CEILING LIGHTS

ISCHIA SOFT CW3/S	PLS120015-1	256x31x10 mm	10-30 V	600 mA	6	3 W	600 lm
ISCHIA SOFT WW0/S	PLS120016-0	256x31x10 mm	10-30 V	450 mA	9	0.5 W	315 lm
ISCHIA SOFT WW3/S	PLS120016-1	256x31x10 mm	10-30 V	600 mA	6	3 W	522 lm

CW= Cold White;  
WW= Warm White;  
/S= soft start



AMALFI CW0	PLS120017-0	506x31x10 mm	10-30 V	600 mA	12	0.5 W	480 lm
AMALFI CW3	PLS120017-1	506x31x10 mm	10-30 V	1200 mA	12	3 W	1200 lm
AMALFI WW0	PLS120018-0	506x31x10 mm	10-30 V	600 mA	12	0.5 W	420 lm
AMALFI WW3	PLS120018-1	506x31x10 mm	10-30 V	1200 mA	12	3 W	1044 lm
AMALFI SOFT CW0/S	PLS120019-0	506x31x10 mm	10-30 V	600 mA	12	0.5 W	480 lm
AMALFI SOFT CW3/S	PLS120019-1	506x31x10 mm	10-30 V	1200 mA	12	3 W	1200 lm
AMALFI SOFT WW0/S	PLS120020-0	506x31x10 mm	10-30 V	600 mA	12	0.5 W	420 lm
AMALFI SOFT WW3/S	PLS120020-1	506x31x10 mm	10-30 V	1200 mA	12	3 W	1044 lm